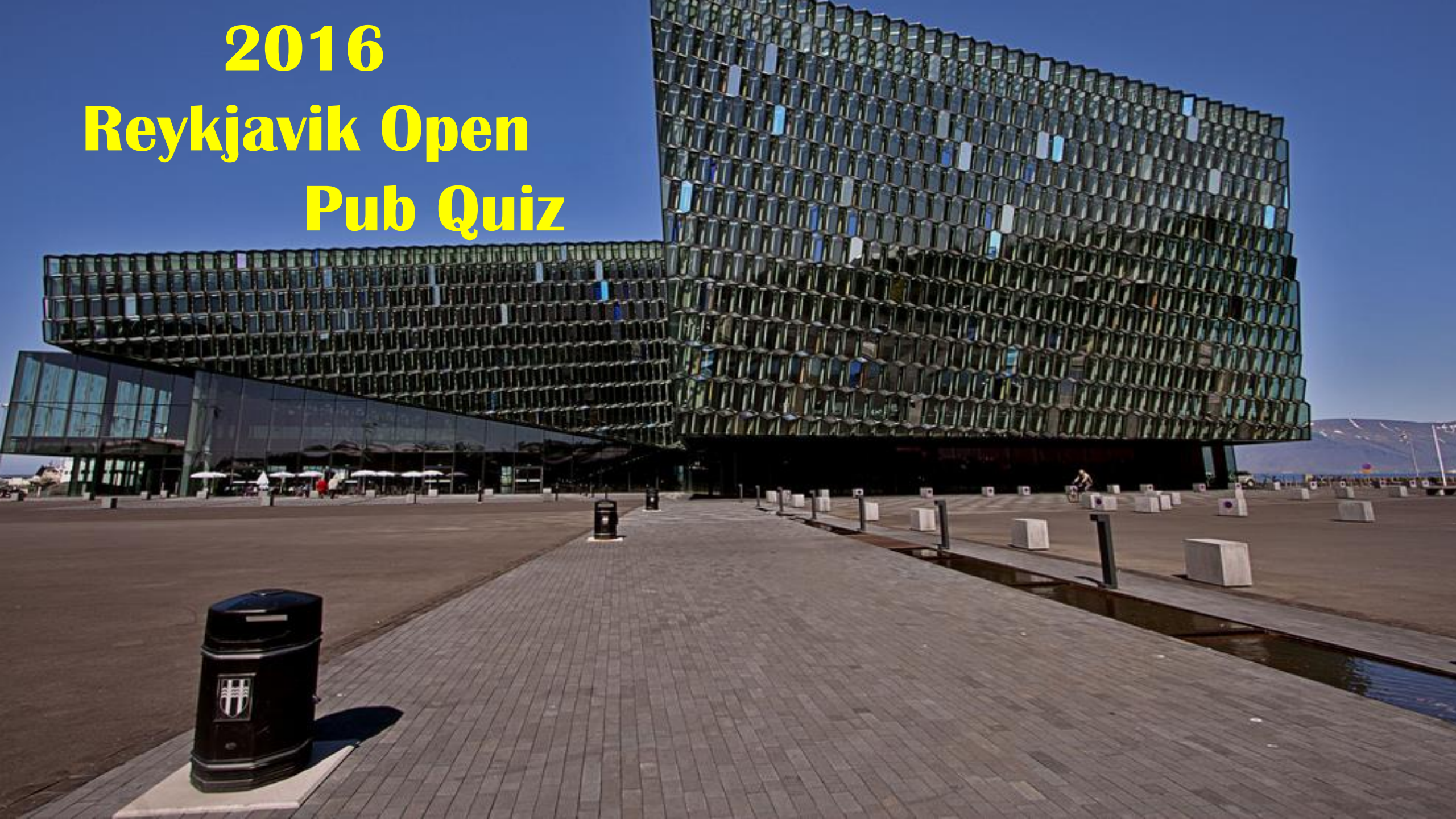


2016 Reykjavik Open Pub Quiz



Question #1

Who was the winner of last years (2015)
Reykjavik Open?

Answer #1

Erwin L'ami was the impressive winner last year!

Starting with 8,5 out of 9 he could afford a last round loss without any damage.



Question #2

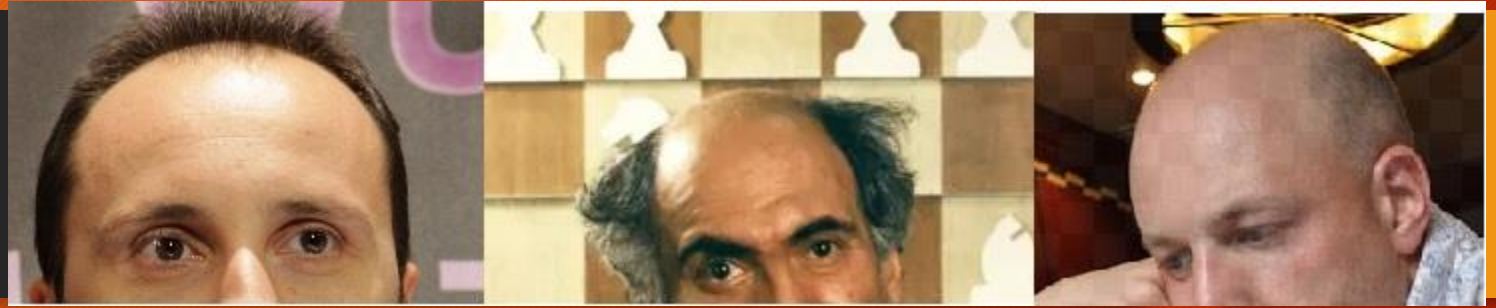
The 2016 Candidates Tournament started today.
Please name the 8 players participating!

Answer #2

Anand
Karjakin
Svidler
Nakamura
Caruana
Topalov
Giri
Aronian

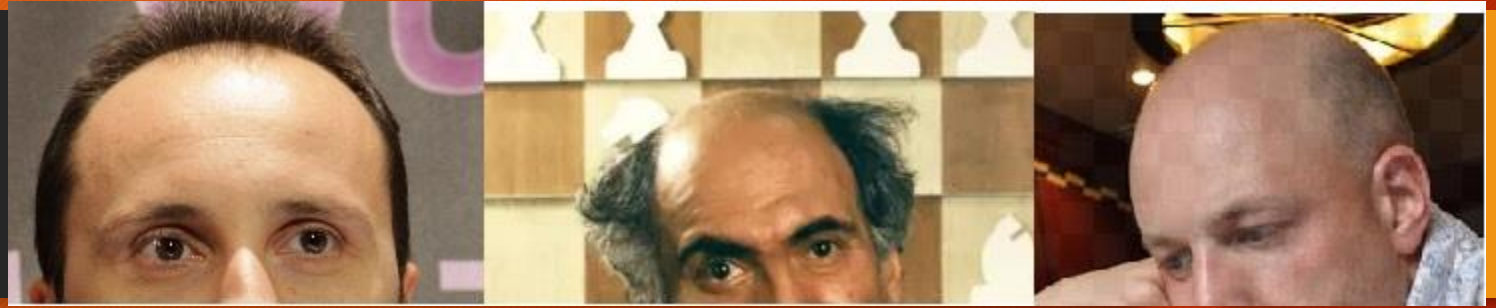


Question #3



Name these 3 players whose faces are partially blurred in the above picture.

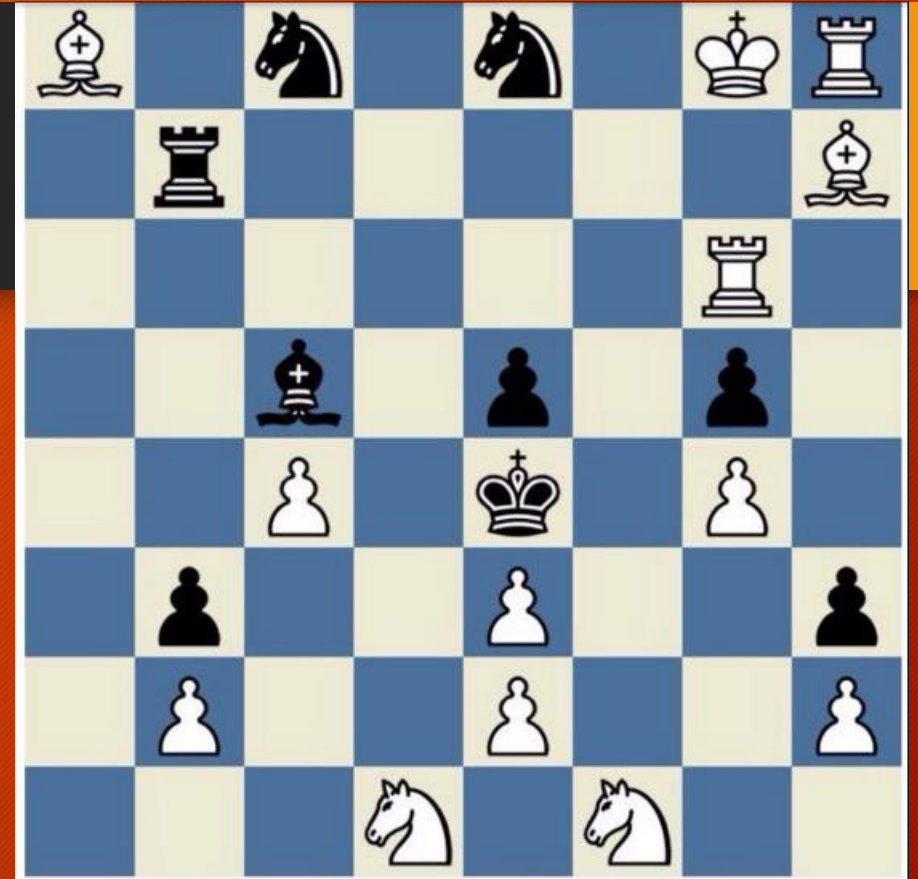
Answer #3



Topalov - Tal - Shabalov.

Question #4

Your goal is to find the worst possible move for white in this position!



Answer #4

Given that only ONE move doesn't mate in one, the worst move is 1.Rc6



Question #5







In 1998, a knockout event was held in Groningen to determine the challenger for Anatoly Karpov. Karpov got seeded straight into the finals which caused some protest.

On the right you see the flags and starting rank (seed) of the players who made the semi-final. Name the 4 players



Question #5

Adams-Short and
Gelfand-Anand

Semifinals			Final				
9		Michael Adams	4	9		Michael Adams	4
18		Nigel Short	3	2		Viswanathan Anand	5
8		Boris Gelfand	$\frac{1}{2}$				
2		Viswanathan Anand	$1\frac{1}{2}$				

Question #6

Who is this chessplayer?

- World Junior Champion
- 4x National Champion
- Quarter-final stage of Candidates matches
- Joint winner of 2013 European Individual Championship (8-way tie)
- Represented more than one country at Olympiads
- Has played in Reykjavik on more than one occasion

Answer #6

Alexander Beliavsky

- World Junior Champion
- 4x National Champion
- Quarter-final stage of Candidates matches
- Joint winner of 2013 European Individual Championship (8-way tie)
- Represented more than one country at Olympiads
- Has played in Reykjavik on more than one occasion



Question #7

LUCENA position is the correct name.



Question #8

In 2015, Magnus Carlsen was blitz, rapid and classical World Champion heading into the rapid and blitz championship in Berlin.

He managed to defend his rapid championship but failed to win the blitz championship. Who became blitz World Champion for the 3rd time in 2015?

Answer #8

Alexander Grischuk won the blitz championship



Question #9



This chess scene is from a famous 90's movie that's about to have a sequel released. What is the name of the movie?

Answer #9

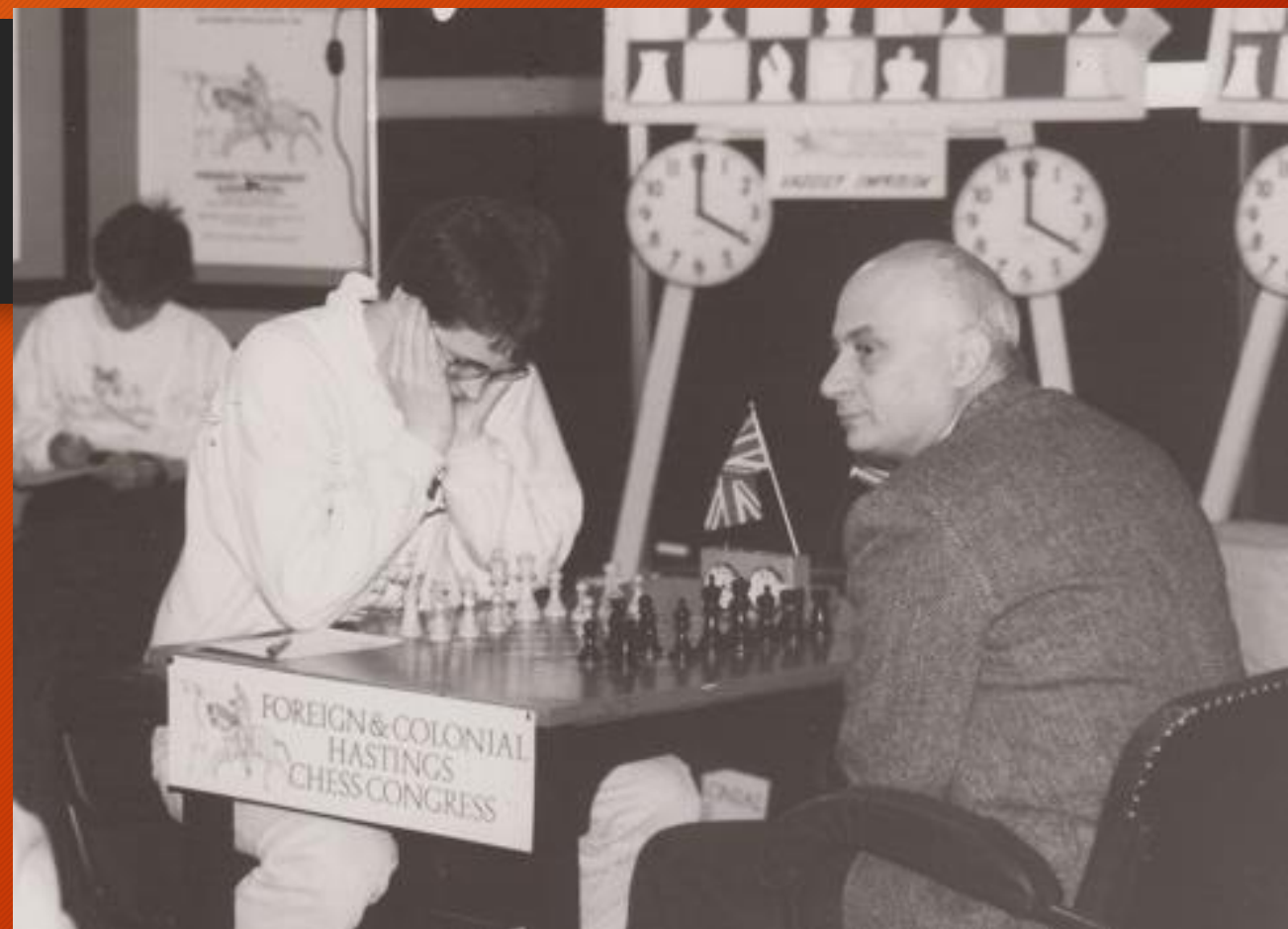


Independence Day (1996)

Question #10

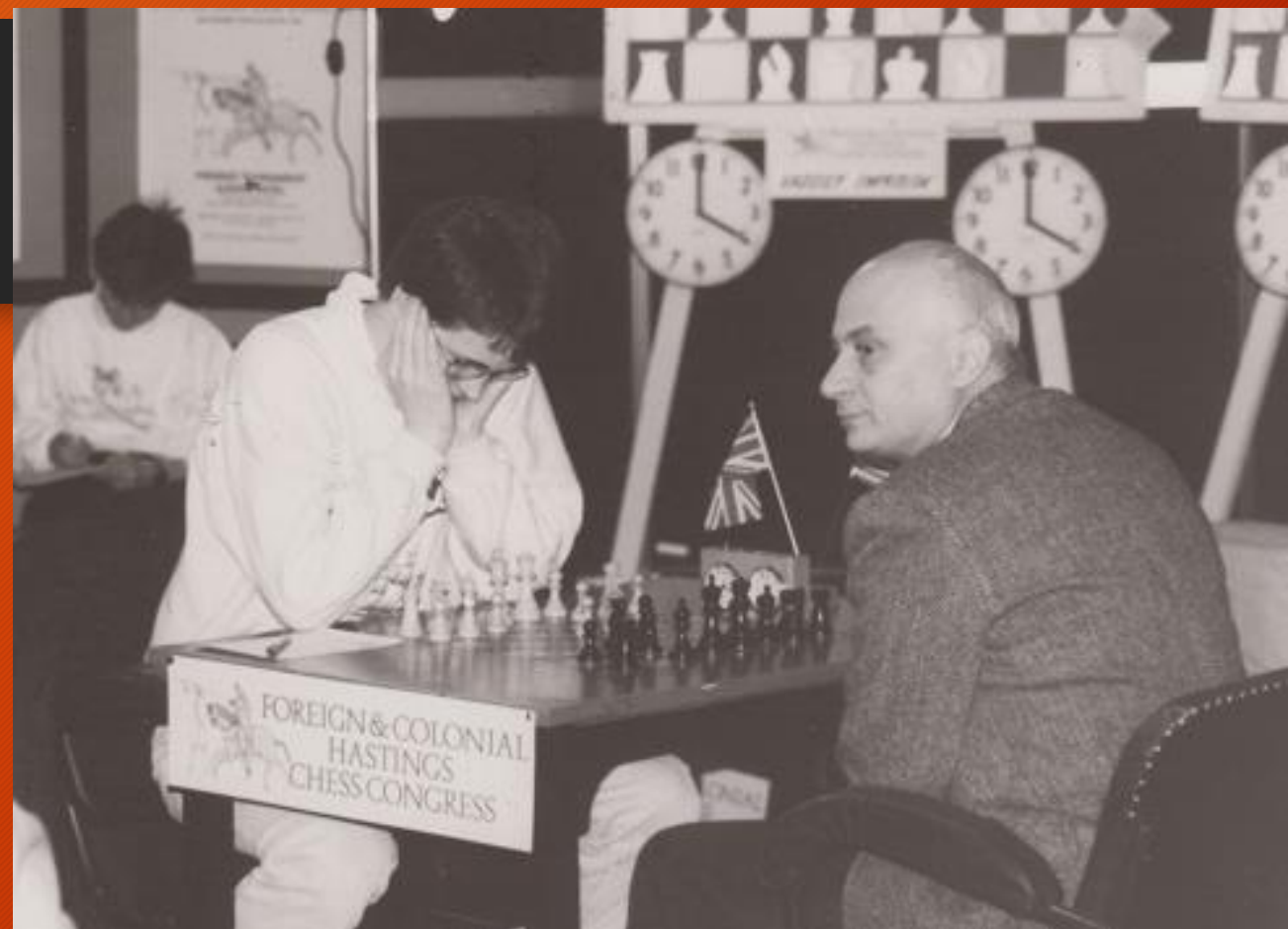
A photo taken in Hastings 88/89

Who are the players?



Answer #10

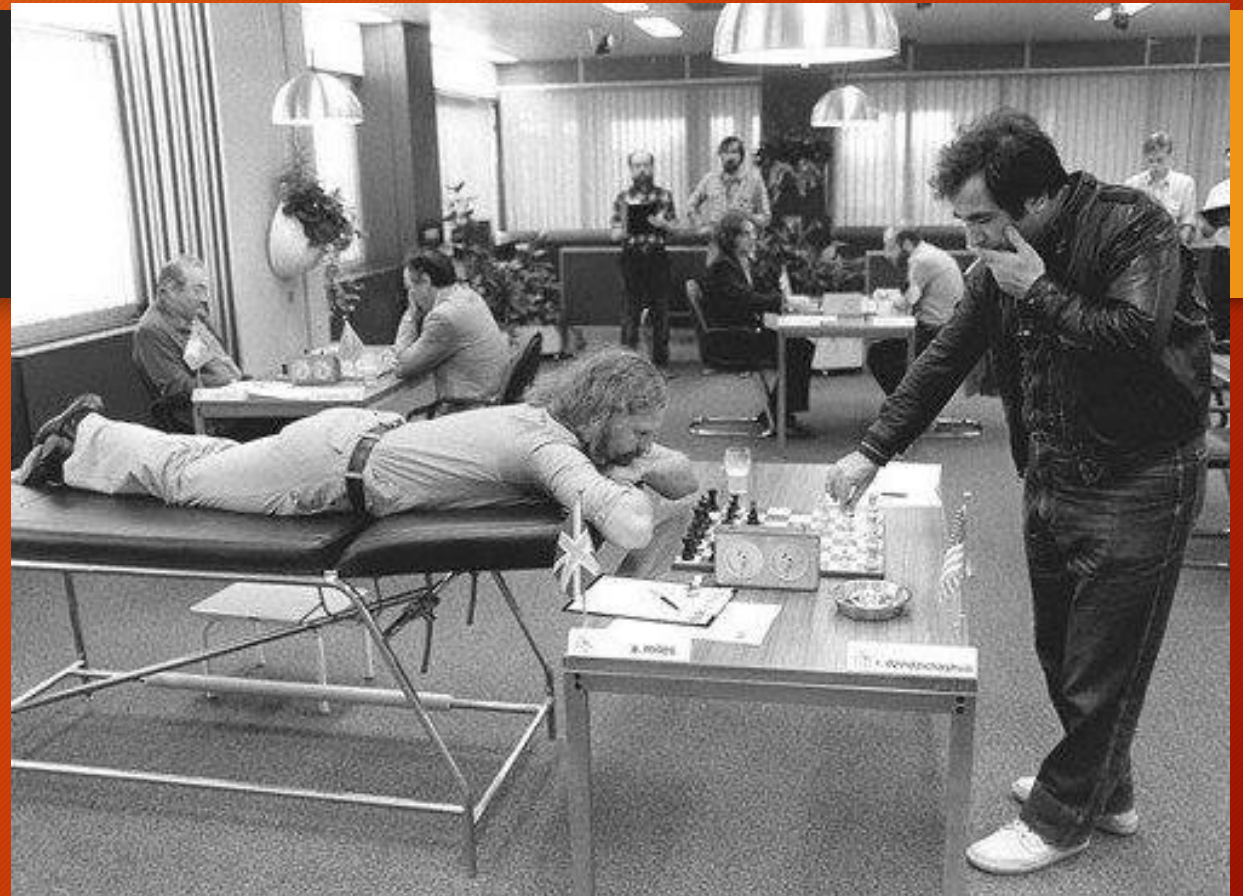
Nigel Short and Boris Gulko



Question #11

This picture from Tilburg in 1985 shows the joint-winner laying down on a special stretcher to relieve his back pain.

What is the name of the player laying down and what is the name of the player who decided to play this game standing upright in protest?



Answer #11

Laying down is Tony Miles and his opponent standing upright is Roman Dzindzichashvili



Question #12

In chess, the "touch-move" rule states that if a player (whose turn it is to move) touches one of his pieces, it must be moved if it has a legal move.

In one famous instance, in Linares 1994, former World Champion Garry Kasparov changed his move after momentarily letting go of a piece. Kasparov went on to win the game. The tournament officials had videotape proving that his hand left the piece, but refused to release the video evidence. A factor counting against his opponent in the game was that a whole day passed before a complaint was issued, and such claims must be made during the game. The videotape revealed that Kasparov did let go of the piece for one quarter second. Name Kasparov's opponent in the game

Answer #12

Judit Polgar

Spurning #13

On Chessgames.com a certain famous game played in 1996 in Dos Hermanas is called:

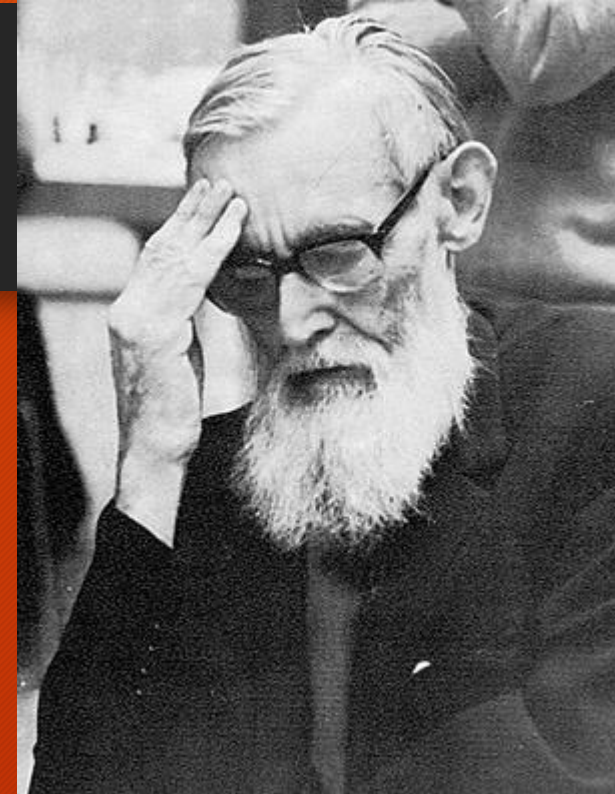
„The Late KNIGHT show“

This name refers to the length of the game and the tricky knight who secured the win (in 90 moves) in an otherwise usually drawn endgame.

Who were the players playing in this game?

Question #14

This is a German master whose first name was Emil. Emil was born in 1908. He became associated with the Nazi party and later had great interest in Nostradamus.



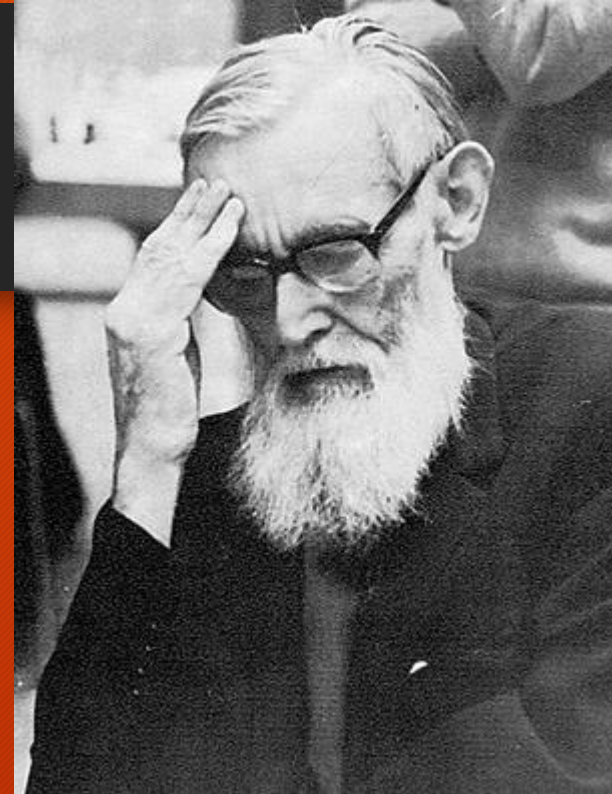
When it came to chess, his last name is associated with quite a few gambits but one of them is quite well known and popular among gambit enthusiasts.

What is Emil's last name and the name of his best known gambit?

Answer #14

This is Emil Joseph Diemer of...

The Blackmar-Diemer gambit



Question #15

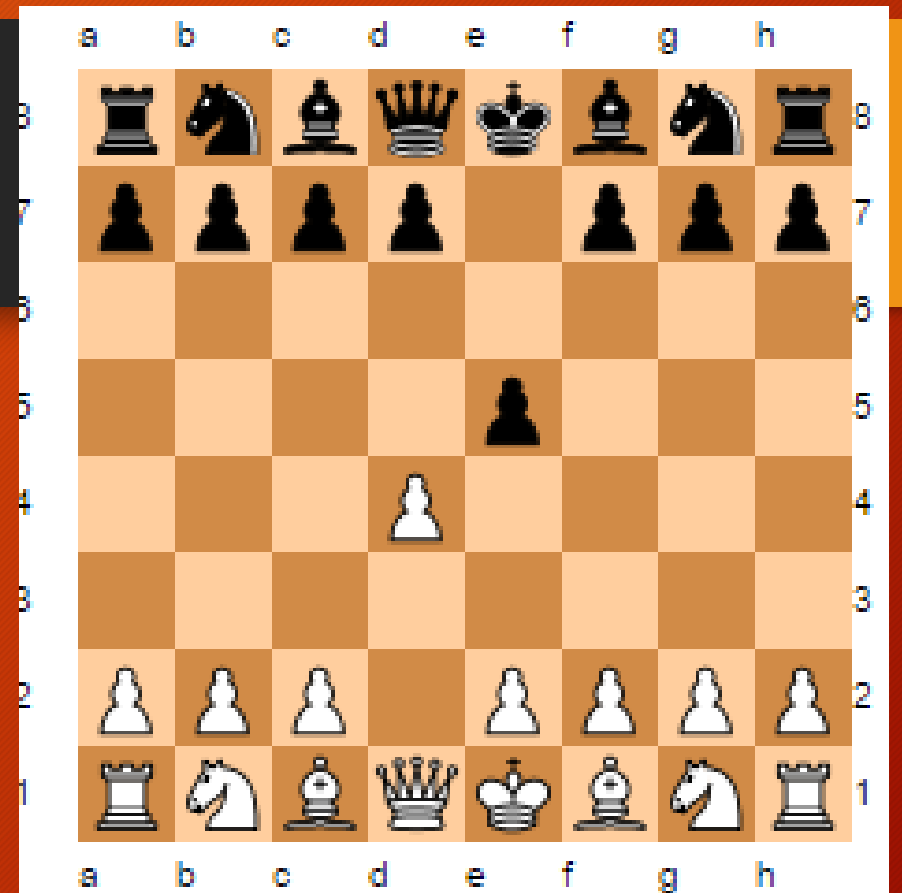
Jeff Sonas is a statistical chess analyst who invented the Chessmetrics system for rating chess players. On his list of top players former World Champion Garry Kasparov sits in place #1, closely followed by Bobby Fischer and Jose Capablanca respectively. In place #10, rated above Korchnoi, Ivanchuk, Petrosian and Tal to name a few, is a player from the United States who was a leading chess player. At the age of 22, he won one of the strongest tournaments of the time but his illness and early death prevented him from challenging for the World Chess Championship. Name this chess player.

Answer #15

Harry Nelson Pillsbury

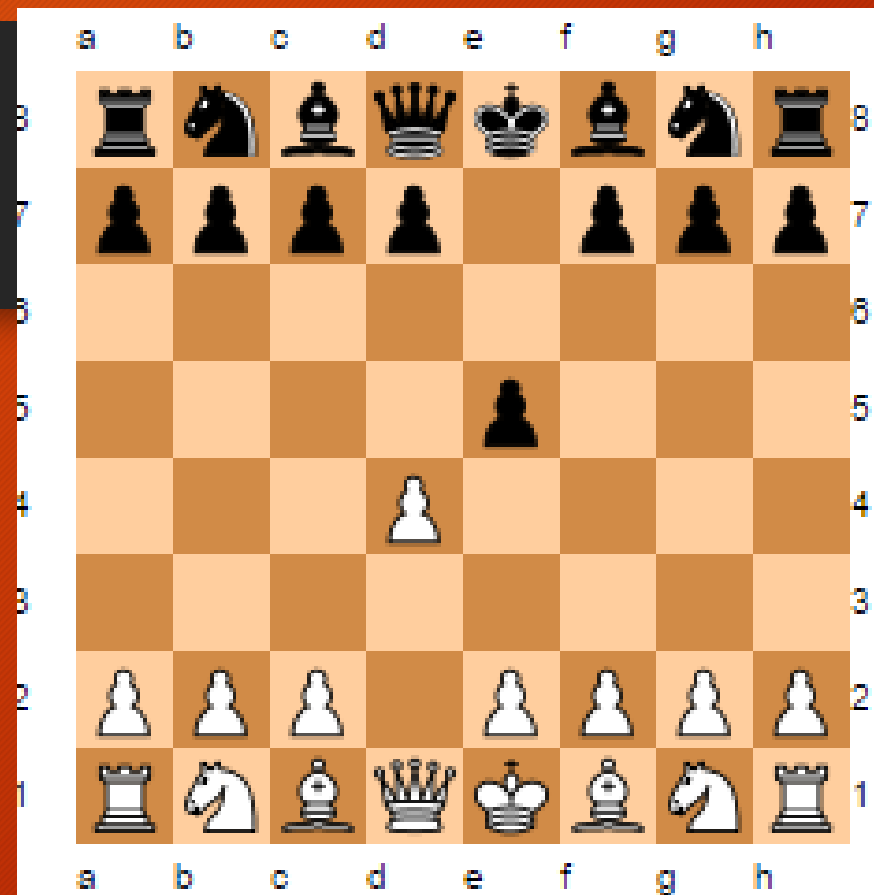
Question #16

What is the name of this NOT so respectable gambit?



Question #16

This is the Englund Gambit



Question #17

This is the final position of a pre-arranged draw between Miles and Hubner at a respectable tournament in the 1980's

Reproduce the moves leading to this 5-move draw with white playing the last move 5.e4



Answer #17

- 1.d4 e5
- 2.dxe5 Qh4
- 3.Nf3 Qa4
- 4.Nc3 Qa5
- 5.e4



Question #18

Associate the ECO Codes with their corresponding opening:

- | | |
|--------|--------------------|
| a) B22 | 1. French Winawer |
| b) C45 | 2. Scandinavian |
| c) B01 | 3. Sicilian Alapin |
| d) C15 | 4. Scotch Game |

Answer #18

A - 3 : B22 = Sicilian Alapin

B - 4 : C45 = Scotch Game

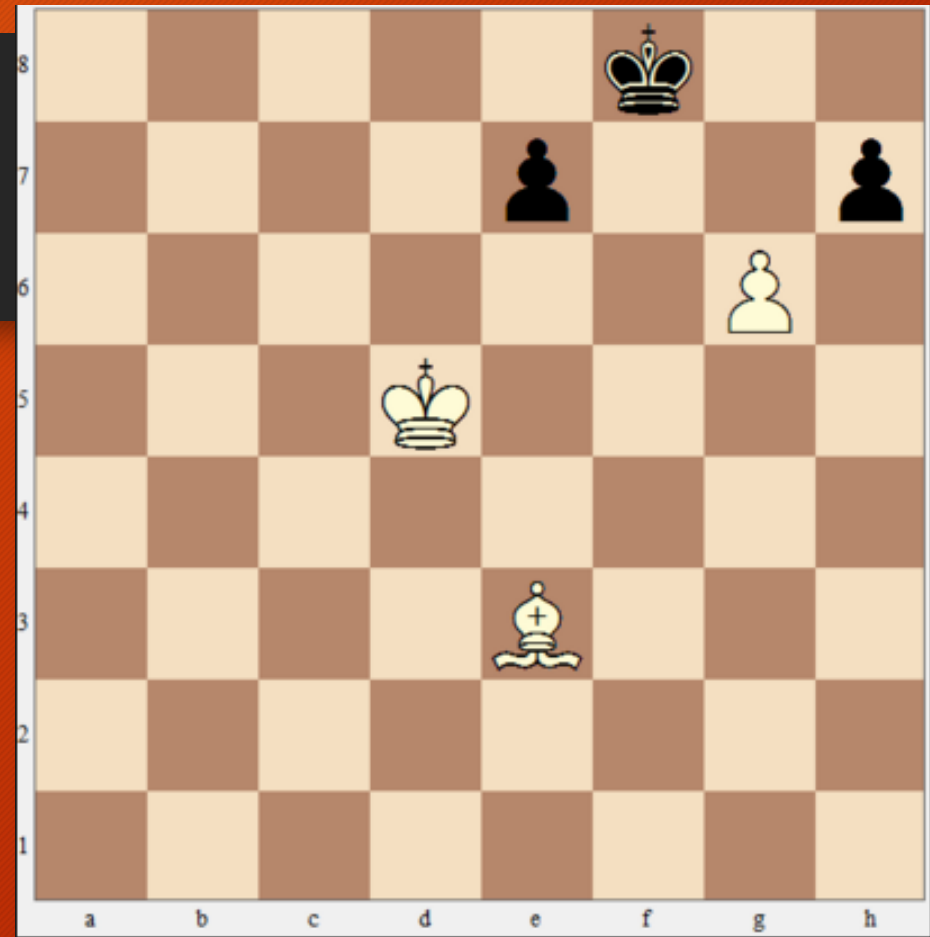
C - 2 : B01 = Scandinavian

D - 1 : C15 = French Winawer

Question #19

This is a well known chess study by a well known author.

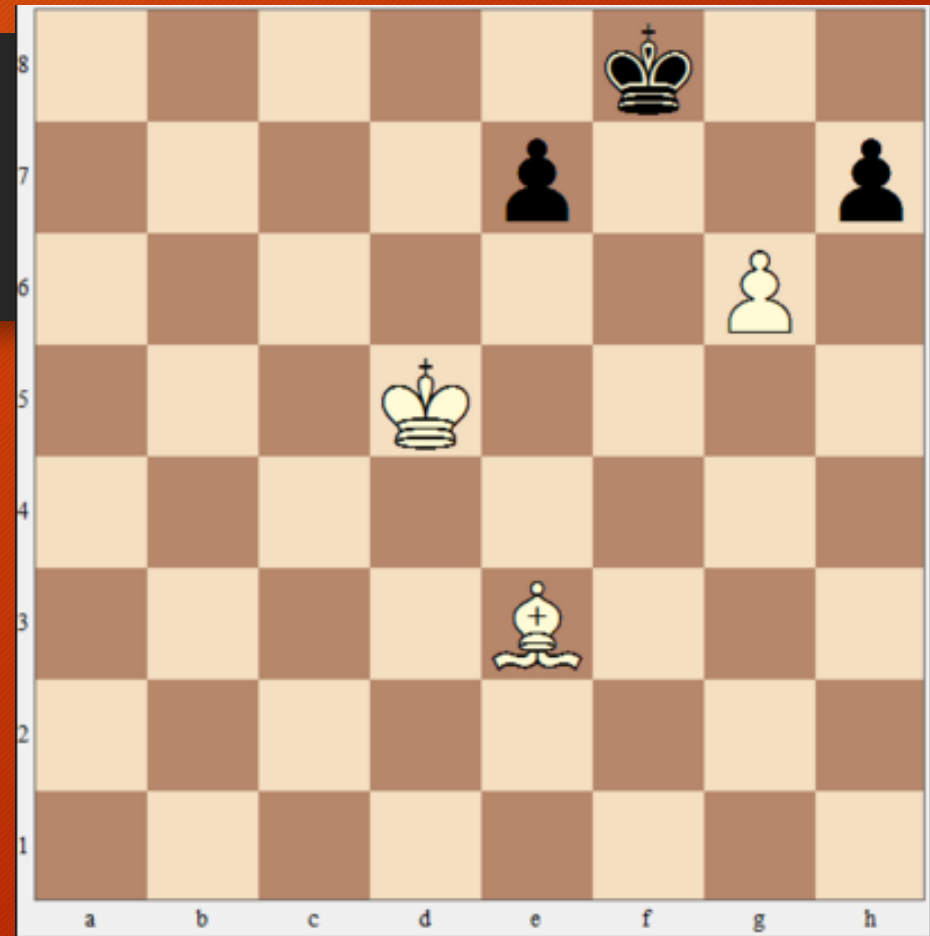
What is the name of the author and what is the mainline of the solution?



Question #19

Alexey Troitsky

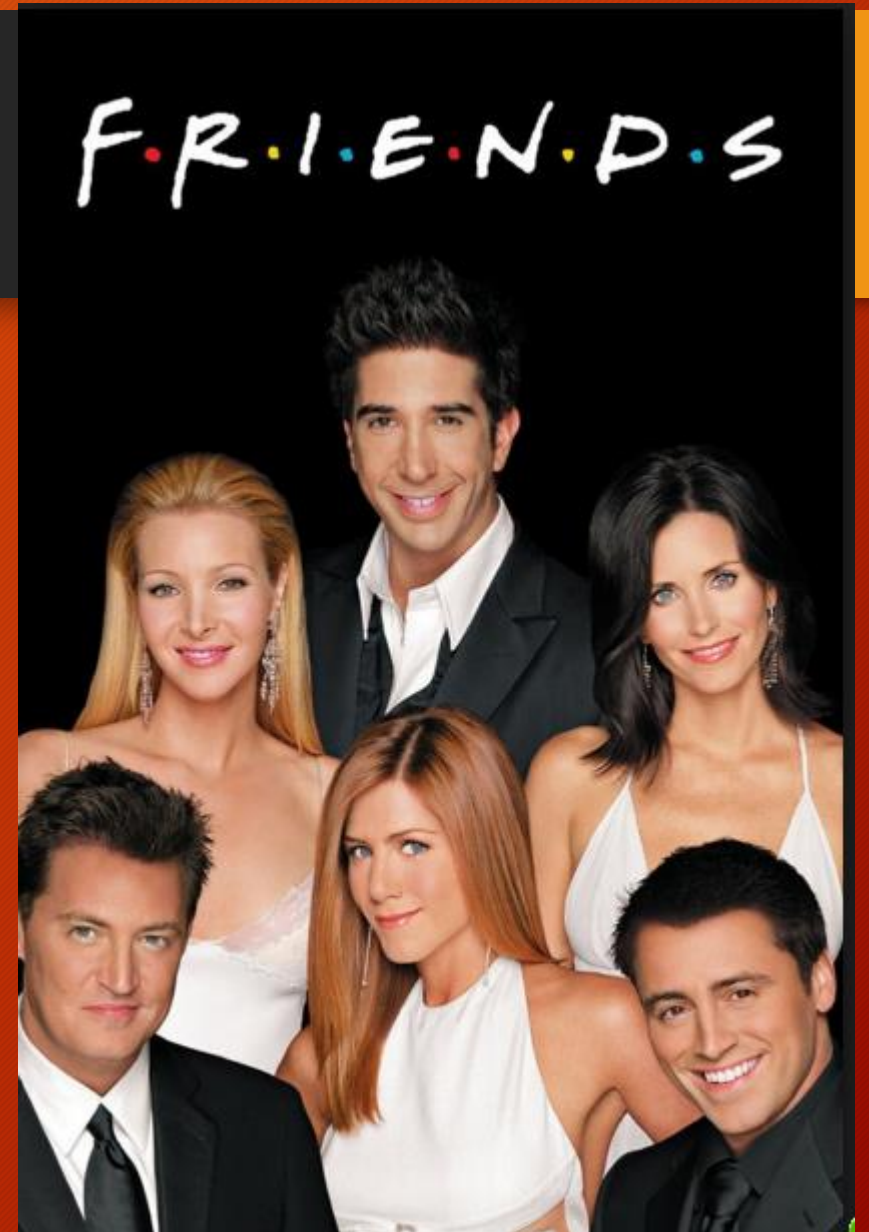
1.Bh6+ Kg8 2.g7 Kf7 3.g8=Q+ Kxg8 4.Ke6 Kh8
5.Kf7 e5 6.Bg7#



Question #20

Friends was one of the most popular sitcoms of all time. In one of the episodes, two of the main characters play a game of chess although the rules and movements of the game are a bit „liberal“

What is the name of the characters that played chess on Friends?
















Answer #20

Joey and Phoebe
















Question #21

92		Fransson Lennart	1706756	SWE	2144	S60
93		Christensen Janus	1408402	DEN	2136	
94		Riccardi Thomas	2025973	USA	2135	
95		Lobersli Henrik Oie	1511947	NOR	2134	U18
96		Edel Thomas	24653233	GER	2127	
97		AGM Baldursson Hrannar	2301156	ISL	2124	
98		Bruun Henrik Emil	1410334	DEN	2123	
99		Lindsoe Fredrik Aunan	1506560	NOR	2112	
100		Darnell Anton	1720244	SWE	2110	U16
101		Jameson David	1801538	WLS	2103	
102		Amos Frank	4635442	GER	2101	
103		WFM Santeramo Alessia	850810	ITA	2095	w U16
104		Finsterwalder Sebastian	24632090	GER	2095	

One player in the tournament has the FIDE approved **AGM** title. What does that stand for?

Question #21

92		Fransson Lennart	1706756	SWE	2144	S60
93		Christensen Janus	1408402	DEN	2136	
94		Riccardi Thomas	2025973	USA	2135	
95		Lobersli Henrik Oie	1511947	NOR	2134	U18
96		Edel Thomas	24653233	GER	2127	
97	 AGM	Baldursson Hrannar	2301156	ISL	2124	
98		Bruun Henrik Emil	1410334	DEN	2123	
99		Lindsoe Fredrik Aunan	1506560	NOR	2112	
100		Darnell Anton	1720244	SWE	2110	U16
101		Jameson David	1801538	WLS	2103	
102		Amos Frank	4635442	GER	2101	
103	 WFM	Santeramo Alessia	850810	ITA	2095	w U16
104		Finsterwalder Sebastian	24632090	GER	2095	

It stands for Arena Grandmaster given for reaching a certain rating on the FIDE online Arena site.

Question #22



Name the pictured rare openings played by white

Question #22



1.g4 = Grob or Grob's Attack

1.b4 = Sokolsky or Orangutan Opening

1.f4 = Bird's Opening

Question #23

In 1999, Alexander Khalifman won the FIDE World Championship in a knockout event in Las Vegas.

Who came 2nd after losing in the final match against Khalifman?

Answer #23

The Armenian - Vladimir Akopian

Question #24

In that 1999 tournament, 100 players started this very strong knockout event.

What seed was Alexander Khalifman at the start? (i.e. What was his starting rank according to rating)

- a) 16 b) 26 c) 36 d) 46

Answer #24

Khalifman started as the #36 seed!

Question #25

A famous missed opportunity.
Name the players playing with
white and black correctly and
which move did black miss
here?



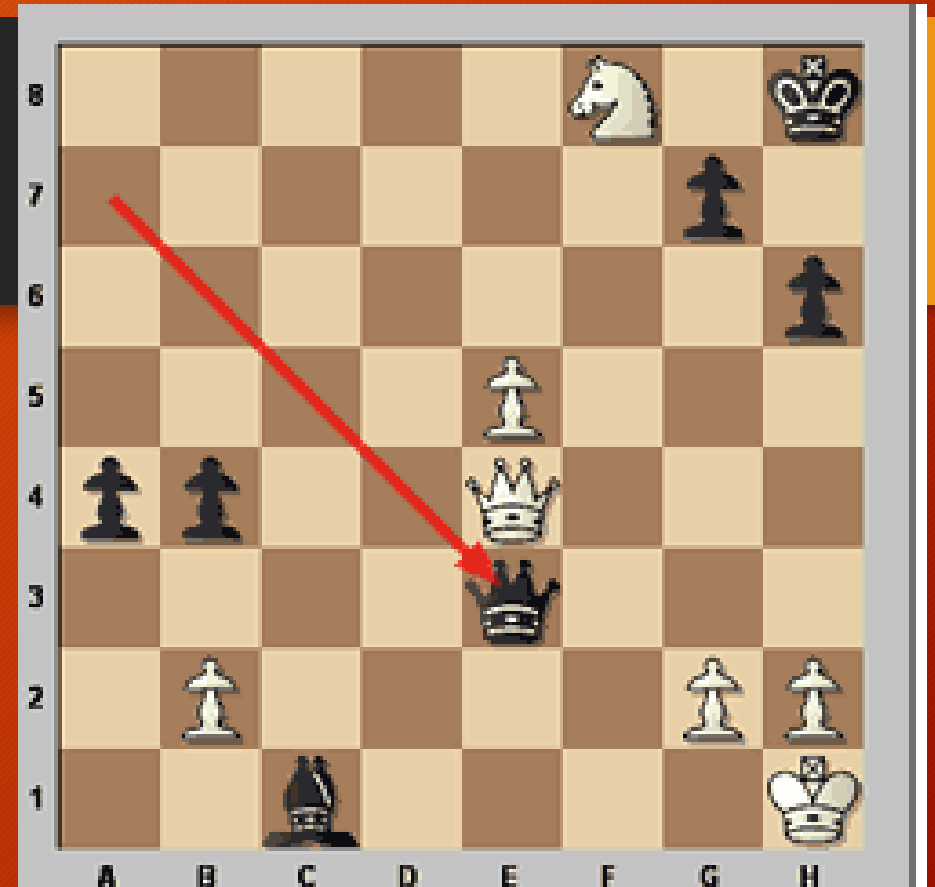
Question #25

Carlsen had white against Anand who missed ...Nxe5 which more or less crushes white.



Question #26

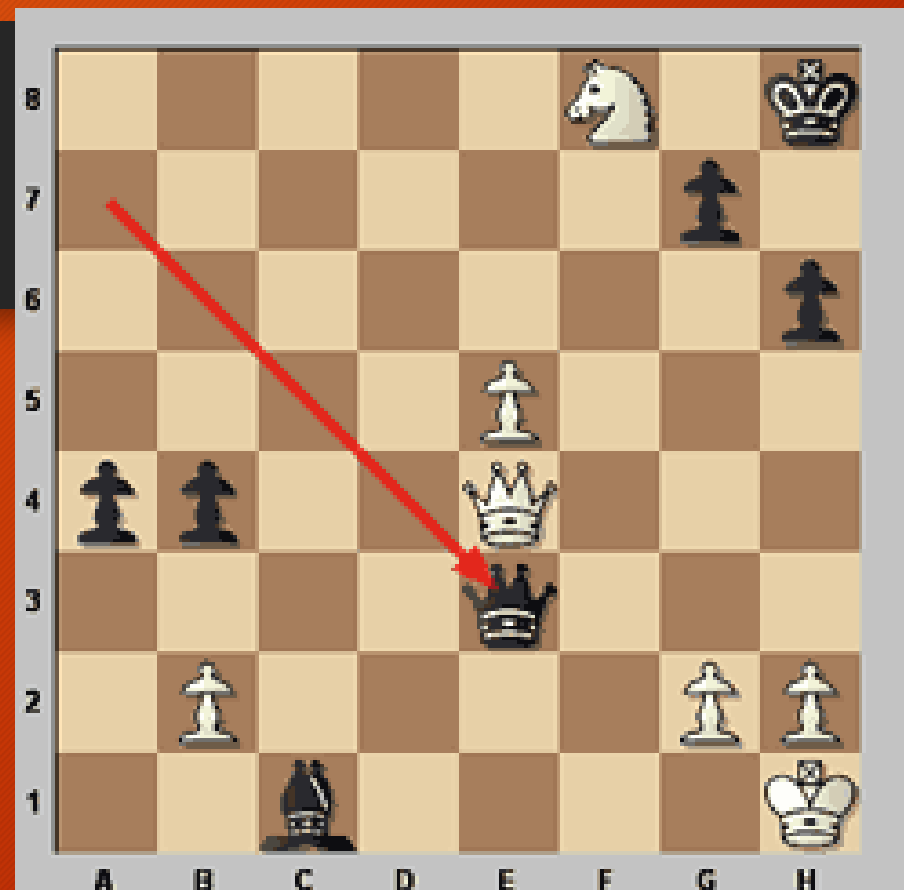
- The following position appeared in a game played in Bonn, Germany in 2006.
- The player with black was rated 2750 at the time. He had been slightly better the whole game but just played the horrible blunder 34...Qe3?? which white promptly answered with 35. Qh7 mate, causing quite the stir in the audience. Name the players.



Answer #26

White was Vladimir Kramnik

Black was Deep Fritz 10



Spurning #27

ECO is a classification system for chess openings. What does ECO stand for?

Answer #27

ECO = Encyclopedia of Chess Openings

Question #28

In an episode from the famous Seinfeld sitcom, we find Seinfeld in a dating dilemma. He has to constantly read out stupid scenarios from a theatre play with his girlfriend so that he can later have sex.

In the episode he described the situation as a chess match between his organs (pictured). In his fantasy, which organs were duking it out on the chessboard?



Answer #28

A chess match between his **PENIS** and his **BRAIN**.



Question #29

- The pictured chess player is an Estonian grandmaster. He was one of Spassky's seconds in his Match of the Century in Reykjavik in 1972. In a recent interview with chess24 Spassky recounts that this second turned out to be a spy for the Americans. According to Spassky he conspired with Robert Byrne, who ran the chess section of the New York Times and would later be his co-author for a book on the match. Name this Estonian grandmaster



Question #29

- This is Ivo Nei



Question #30

Magnus Carlsen with his manager after a dramatic last round in the 2013 Candidates.



Who were the leaders before the last round, who did they play in the last round and what were the results?

Answer #30

Magnus Carlsen led with Kramnik heading into the last round with 8,5 out of 13.



In the last round, Carlsen lost against Svidler and had to wait for Ivanchuk to defeat Kramnik to secure the win for him on tiebreaks.

The end - unless we need tiebreaks!

Tiebreak #1

Who is the author of this chess book on the Smith-Morra gambit?



Tiebreak Answer #1

Marc Esserman



Tiebreak #2

In the last several years the US Women's Championship has shifted between Irina Krush and Anna Zatonskih with Irina having the upper hand 6-3 in that span.

Name ONE other champion since (and not including) the year 2000.

Tiebreak #2 Answer

Not including the year 2000 you get a correct answer for one of the following:

Jennifer Shahade

Anna Hahn

Rusa Goletiani